

Our Mission



Our mission is to become the recognised gold standard in social care by empowering the individuals we support, our staff and our community to grow and succeed.



Our Vision



Our vision is that everyone, no matter what their individual support needs, is able to live to their full potential and be an active and valued member of our community.



New ELCAP Values

What's behind the words?

We are adaptable.

We care – and keep on caring.

We communicate well.

We go the extra mile.

We treat each other with kindness and understanding.



We care – and keep on caring.



We care – and keep on caring



Care:

- The process of caring for somebody/something and providing what they need for their health or protection.
- Attention or thought that you give to something that you are doing so that you will do it well and avoid mistakes or damage.

Caring:

- Kind, helpful and showing that you care about other people.



We treat each other with kindness and understanding.



We treat others with kindness and understanding

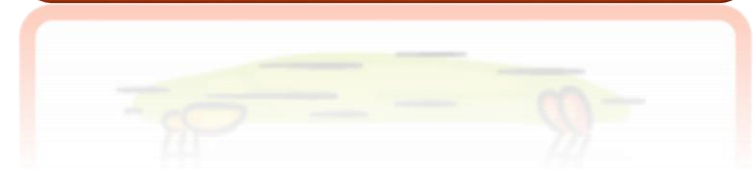


Kindness:

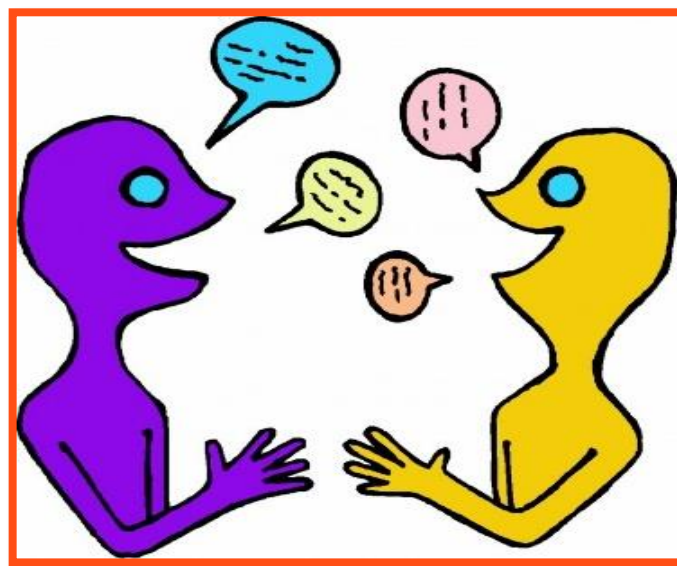
- Caring about others; gentle, friendly and generous

Understanding:

- Sympathetic awareness or tolerance



We communicate well.



We communicate well



- **Communicate:**
 - The activity or process of expressing ideas and feelings or of giving people information.
- **Well:**
 - In a good, right or acceptable way.



We are adaptable.



We are adaptable



- **Adaptable:**
 - The quality of being able to change or be changed in order to deal successfully with new situations.



We go the extra mile.



We go the extra mile



- **What this means:**
 - To make a special effort to achieve something.
 - To make more effort than is expected of you.

